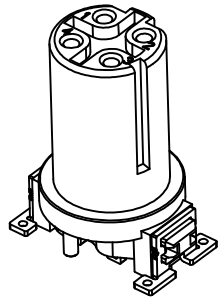
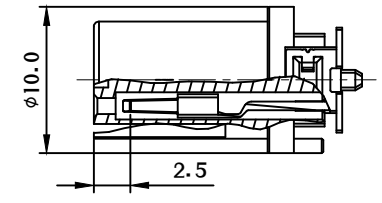
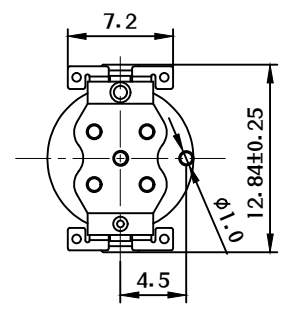
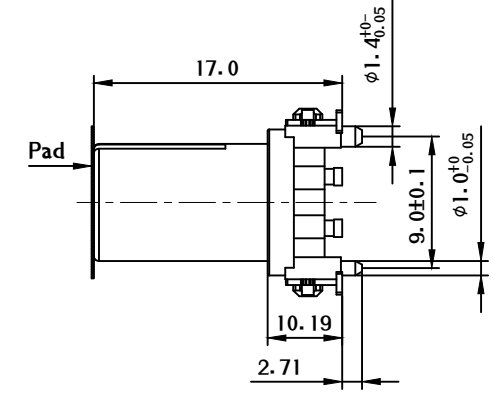
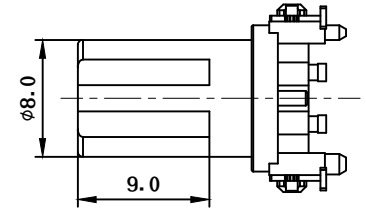
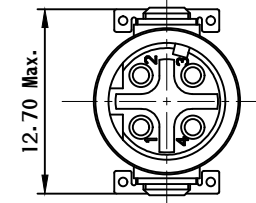


REV	ECN NO	DESCRIPTION	DATE	APPROVED
AA	-	NEW RELEASED	2020.03.25	CLARA



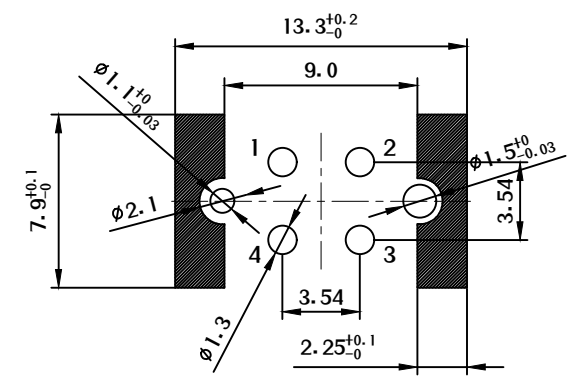
3D View



- Material:**
1. Insulation Housing: LCP Black UL94V-0.
 2. Fitting Nail: Brass Tin Plated.
 3. Contact: Phosphor bronze Gold Plated.
- Technical Data:**
1. Standard: IEC61076-2-101.
 2. Rated Voltage: See Table 1.
 3. Rated Current: See Table 1.
 4. Temperature Range: -40°C~+105°C.
 5. Durability: ≥500 Times Cycles.

Connector Table 1

Bomcan Part No.	Coding & Pins	Socket Pin out	Contact Size(mm)	Rated Current	Rated Voltage	Accord design Standard
M12SMD04AS01	A Code 4 Pin		1.0	4A	250V/DC	IEC61076-2-101
M12SMD04AS01	A Code 5 Pin		1.0	4A	60V/DC	IEC61076-2-101
M12SMD05BS01	B Code 5 Pin		1.0	4A	60V/DC	IEC61076-2-101
M12SMD04DS01	D Code 4 Pin		1.0	4A	250V/DC	IEC61076-2-101



Recommend P.C. Board Layout
Tolerance ±0.05

UNMARKED TOLERANCES	
DIMENSIONS	TOLERANCE
x.	±1.0
x.x	±0.5
x.xx	±0.25
0 to 500	+15 / -0
< 501	+3% / -0 of length
ANGLES	
x°	±1°



This drawing contains information that is proprietary to BOMCAN and should not be used without written permission. Powered by bomcan.com

DESCRIPTION	M12 DEVICE CONNECTOR SOCKET STRAIGHT PCB MOUNTING SMD REFLOW SOLDERING			
DWG NO	-	BOMCAN PART No	M12SMDXXXXS01	
DRAWN BY	CLARA 2020.03.25	CUSTOMER P/N	-	
CHECKED BY	CALEB 2020.03.25	SIZE: A3	SHEET	UNIT
APPROVED BY	BILL 2020.03.25	REV: AA	1 of 1	mm
		SCALE	Free	Third angle projection